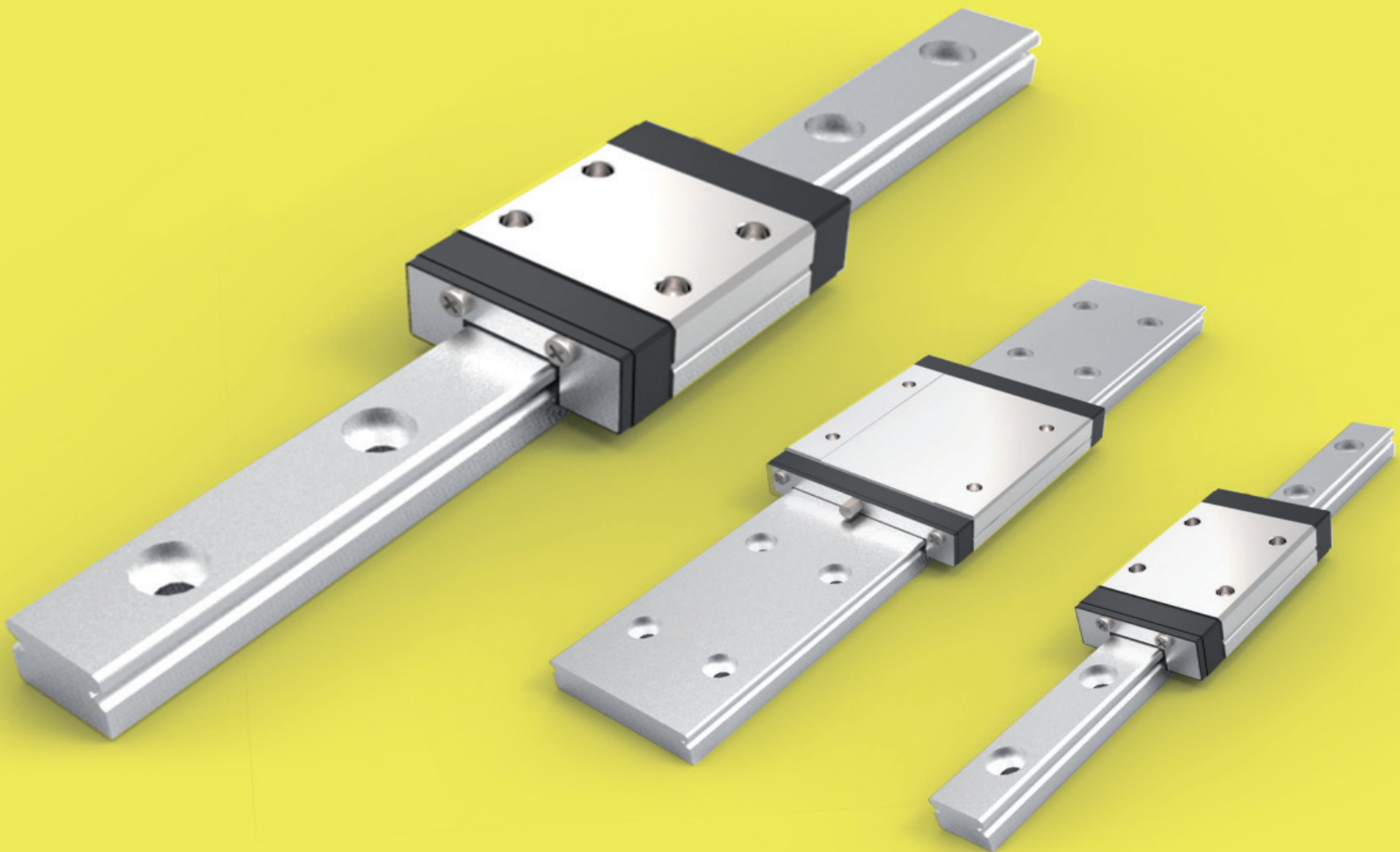


HepcoMotion®

MLG

Stainless Steel Miniature Linear Guides



www.HepcoMotion.com

Miniature MLG / MLGB Series

HepcoMotion's miniature guides have a four point contact ball recirculating system with 45 degree loading angles. There are two recirculating paths per carriage providing ultra smooth movement over the complete stroke length.

These precision units will provide exceptional load capacity in a very small space making them particularly suitable for a whole range of medical, scientific and small mechanical assembly systems where high performance is demanded.

With rails and blocks made from **stainless steel** as standard MLG and MLGB miniature guides are also suitable for use in clean rooms.

The standard MLG rail is available in sizes from 5mm to 20mm. For applications where offset loads are present, a wider rail version is available (MLGB). Both options are part of HepcoMotion's standard stock range.

Both MLG and MLGB types are supplied with the blocks separate to the rails ready for mounting. To make assembly easy the balls are retained within the block by means of a wire retaining system.

Accuracy Grades		
'N'	Normal	Stock Range

Preload Grades		
'ZO'	Zero Preload	Stock Range
'Z1'	Light Preload	

How to install HLG guide using a support rail

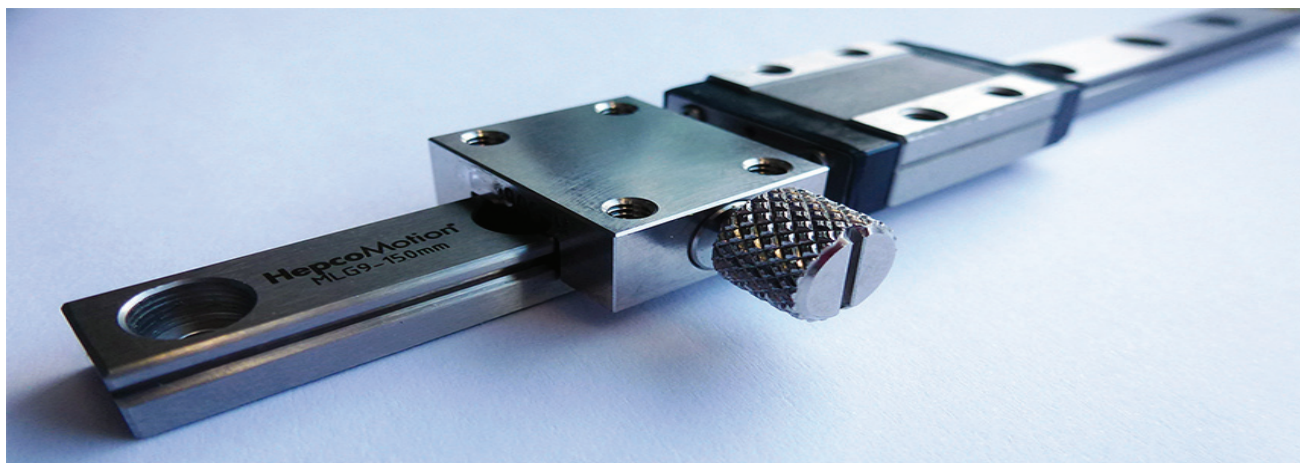
HLG blocks are supplied on a plastic support rail to ensure the internal balls remain within the recirculating system in transit and also to make the assembly process simple.

It is important to align the end of the plastic support rail to the rail and carefully slide the block on to the rail. Incorrect alignment could result in damage to the balls or even worse, loss of a number of balls from the recirculating system.

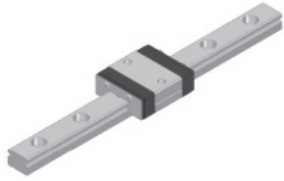
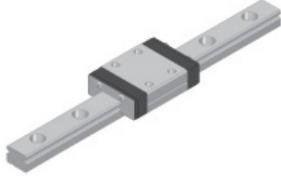
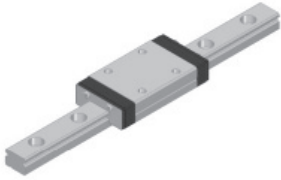
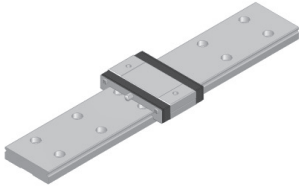
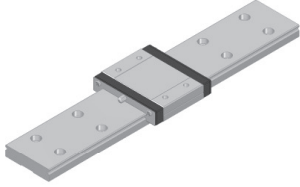
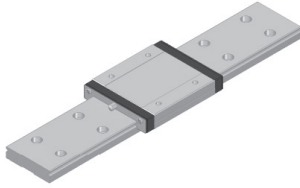
The block should move freely on the rail with no rough spots. Rough running is a sign that contamination has occurred or some balls have been accidentally released during the assembly process.

Brakes

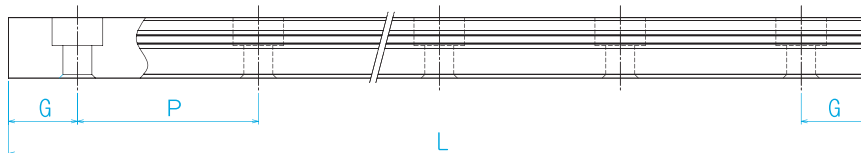
Manual clamping brakes are also available for all sizes, please contact our Sales office on 01884 257000.



Types and Features - Miniature range (stainless steel)

Category	Type	Shape & Features	
Compact type	MLG-C		Short Carriage
	MLG-N		Medium Carriage
	MLG-L		Long Carriage
Wide type	MLGB-C		Short Carriage
	MLGB-N		Medium Carriage
	MLGB-L		Long Carriage
		Standard Miniature Guide Stainless Steel	
		Wide Miniature Guide providing increased rigidity and load capacity Stainless Steel	

Standard & wide miniature rail

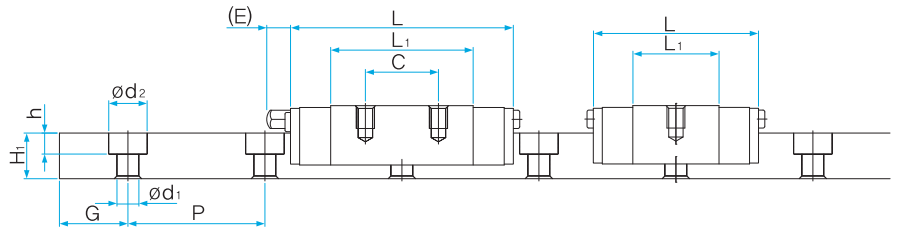
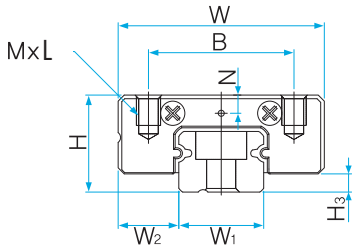


Unit : mm

Model No.	MLG Standard series						MLGB Wide series				
	5	7	9	12	15	20	5	7	9	12	15
Standard pitch P	15	15	20	25	40	60	20	30	30	40	40
G Min	5	5	7.5	8	8	10	5	5	7.5	8	8
Max. length	1000	1000	1000	2000	2000	2000	1000	1000	1000	2000	2000

G equals both ends unless otherwise specified.

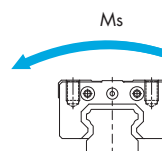
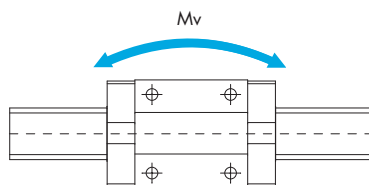
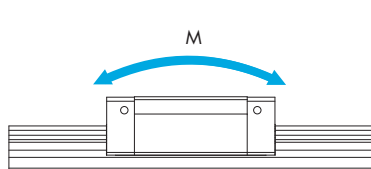
MLG Compact Miniature Series



Ref No.	External dimensions			Dimensions of MLG block							H3
	Height H	Width W	Length L	B	C	M x L	L1	N	E	Grease nipple	
MLG5C	6	12	17	8	-	M2 x 1.5	9.4	1.2	-	-	1
MLG5N			20		-		12.4		-	-	
MLG7C	8	17	19.8	12	-	M2 x 2.5	9.6	1.5	-	-	1.5
MLG7N			24.3		8		14.1		-	-	
MLG7L			31.8		13		21.6		-	-	
MLG9C	10	20	22.4	15	-	M3 x 3	11.8	2.2	-	-	2
MLG9N			31.3		10		20.7		-	-	
MLG9L			41.4		15		30.8		-	-	
MLG12C	13	27	26.4	20	-	M3 x 3.5	12.8	2.7	-	-	3
MLG12N			34.9		15		21.3		-	-	
MLG12L			45.4		20		31.8		-	-	
MLG15C	16	32	34.4	25	-	M3 x 4	17.7	3.1	4	A-M3	4
MLG15N			44.4		20		27.7		4		
MLG15L			59.4		25		42.7		4		
MLG20C	20	40	39.8	30	-	M4 x 6	22.2	4.2	4	A-M3	5
MLG20N			51.8		25		34.2		4		
MLG20L			69.8		30		52.2		4		

Unit : mm

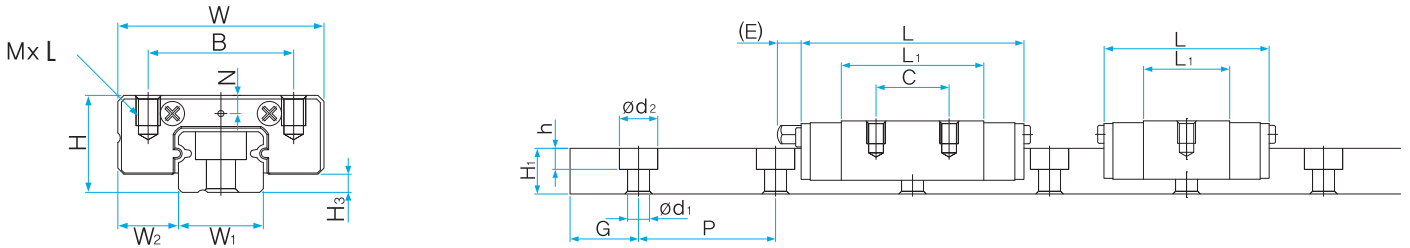
Ref No.	Dimensions of MLG Rail						Basic load rating		Static moment capacity Nm			Weight	
	Width W1 ±0.05	W2	Height H1	Min G	Pitch P	d1 x d2 x h	C N	Co N	M	Mv	Ms	HLG Block g	HLG Rail g/m
MLG5C	5	3.5	3.7	5	15	2.4 x 3.6 x 0.8	516.9	757.1	1.27	1.27	1.8	3.1	139
MLG5N							632.1	1009.4	2.25	2.25	2.35	4.0	
MLG7C	7	5	5	5	15	2.4 x 4.2 x 2.3	924.2	1135.6	1.9	1.9	3.6	6.4	253
MLG7N							1227.1	1703.4	4.3	4.3	5.4	9.0	
MLG7L							1671.6	2649.7	10.2	10.2	8.4	12.6	
MLG9C	9	5.5	6	7.5	20	3.5 x 6 x 3.5	1162.6	1484.9	3.1	3.1	6.1	9.9	391
MLG9N							1697.0	2545.5	9.3	9.3	10.5	17.1	
MLG9L							2337.1	4030.3	22.1	22.1	16.6	25.2	
MLG12C	12	7.5	8	8	25	3.5 x 6.5 x 4.5	2181.7	2384.8	5.4	5.4	12.9	19.8	679
MLG12N							3035.6	3815.6	14.3	14.3	20.7	31.5	
MLG12L							4254.0	6200.4	35.3	35.3	33.6	45.9	
MLG15C	15	8.5	10	8	40	3.5 x 6.5 x 4.5	3443.1	3895.2	12.2	12.2	26.6	37.8	1071
MLG15N							4579.3	5842.8	28.7	28.7	39.9	57.6	
MLG15L							6533.6	9738.1	74.7	74.7	66.5	85.5	
MLG20C	20	10	11	10	60	6 x 9.5 x 5.5	4516.5	5299.4	20.7	20.7	48.7	80.1	1572
MLG20N							6194.8	83277.6	50.4	50.4	76.6	119.7	
MLG20L							8400.1	12870.0	119	119	118	176.4	



Notes:

- For detail of 1st hole position 'G' please see page 2.

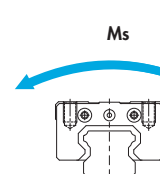
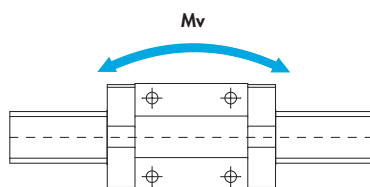
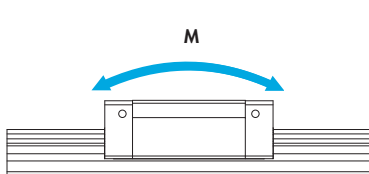
MLGB Wide Miniature Series



Ref No.	External dimensions			Dimensions of MLGB block							H3
	Height H	Width W	Length L	B	C	M x L	L1	N	E	Grease nipple	
MLGB5C	6.5	17	21	13	-	M2.5 x 1.5	13.4	1.4	-	-	1.3
MLGB5N			25		-		17.4		-	-	
MLGB7C	9	25	24	19	-	M3 x 3	12.6	1.7	-	-	2
MLGB7N			33		10		21.6		-	-	
MLGB7L			43.5		19		32.1		-	-	
MLGB9C	12	30	28.1	21	-	M3 x 3.5	16.5	3.2	-	-	3
MLGB9N			40.2		12		28.6		-	-	
MLGB9L			52	24	40.4		-		-		
MLGB12C	14	40	31.1	28	-	M3 x 3.5	17.5	3.2	-	-	3
MLGB12N			44.5		15		30.9		-	-	
MLGB12L			59.7		28		46.1		-	-	
MLGB15C	16	60	42.8	45	-	M4 x 4.5	25.2	3.2	4	A-M3	4
MLGB15N			56.6		20		39		4		
MLGB15L			75.8		35		58.2		4		

Unit : mm

Ref No.	Dimensions of MLGB Rail								Basic load rating		Static moment capacity Nm			Weight	
	Width W1 ±0.05	W2	W3	W4	Height H1	Min G	Pitch P	d1 x d2 x h	C N	Co N	M	Mv	Ms	HLG Block g	HLG Rail g/m
MLGB5C	10	3.5	-	-	4	5	20	2.9 x 4.8 x 1.6	668	1094	4.0	4.0	5.6	5.3	299
MLGB5N									806	1430	6.3	6.3	7.3	6.8	
MLGB7C	14	5.5	-	-	5.5	5	30	3.5 x 6 x 3.2	1102	1514	6.4	6.4	10.8	11.7	560
MLGB7N									1631	2650	15.4	15.4	18.0	18.9	
MLGB7L									2166	3975	30.5	30.5	28.4	27.9	
MLGB9C	18	6	-	-	7	7.5	30	3.5 x 6 x 4.5	1515	2121	10.5	10.5	19.4	23.4	912
MLGB9N									2197	3606	25.5	25.5	33.0	39.6	
MLGB9L									2878	5303	48.6	48.6	48.5	54.9	
MLGB12C	24	8	-	-	8	8	40	4.5 x 8 x 4.5	2753	3339	18.3	18.3	40.7	40.5	1369
MLGB12N									4015	5723	44.9	44.9	69.8	68.4	
MLGB12L									5539	9062	95.5	95.5	110.5	99.9	
MLGB15C	42	9	23	9.5	8	15	40	4.5 x 8 x 4.5	4954	6056	45.7	45.7	128	85.5	2886
MLGB15N									6579	9085	90.7	90.7	192	126.0	
MLGB15L									9076	14384	192	192	304	183.6	



Notes:

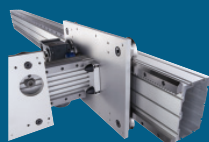
- For details of 1st hole position 'G' please see page 2.

HepcoMotion® Product Range



GV3

Linear Guidance and Transmission System



HDS2

Heavy Duty Slide System



PRT2

Precision Ring and Track System



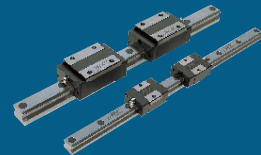
HDRT

Heavy Duty Ring Slides and Track System



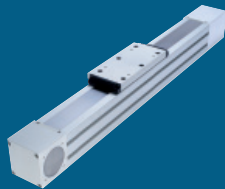
SL2

Stainless Steel Based Slide System



LBG

Linear Ball Guides



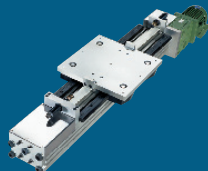
SBD

Sealed Belt Drive



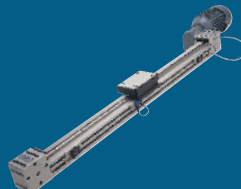
MCS

Aluminium Frame and Machine Construction System



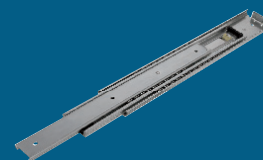
HDLS

Heavy Duty Driven Linear System



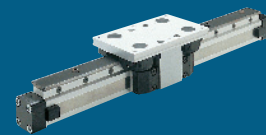
DLS

Linear Transmission and Positioning System



HTS

Telescopic Ball Bearing Slides



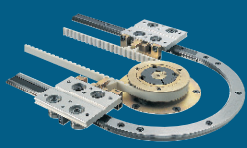
HPS

Powerslide-2 Guided Rodless Cylinder



MHD

Heavy Duty Track Roller Guidance System



DTS

Driven Track System



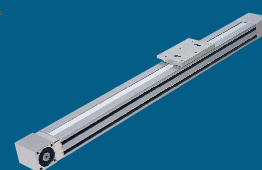
BSP

Ballscrew Premier



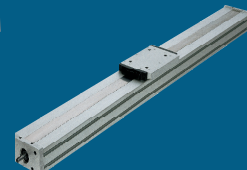
SimpleSelect®

Vee Slide Linear Guidance Systems



PDU2

Profile Driven Unit

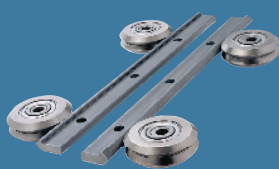


PSD120

Profile Screw Driven Unit

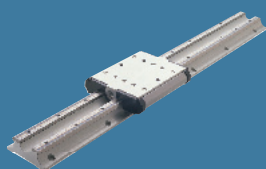
Bishop-Wisecarver Product Range

HepcoMotion® – Exclusive European partners and distributors for Bishop-Wisecarver since 1984.



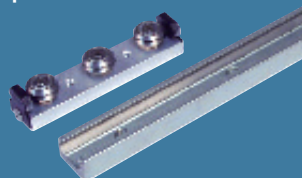
DUALVEE®

Single Edge Slide System



LoPro®

Aluminium Based Slide System



UtiliTrak®

Lightweight U Channel Guideway

For further information on HepcoMotion® products – please request our leaflet 'FPL'

HepcoMotion®

www.HepcoMotion.com

Lower Moor Business Park, Tiverton Way, Tiverton, Devon, England EX16 6TG

Tel: +44 (0)1884 257000 Fax: +44 (0)1884 243500

E-mail: sales@hepcotion.com

CATALOGUE No.MLG 01 UK © 2015 Hepco Slide Systems Ltd.

Reproduction in whole or part without prior authorisation from Hepco is prohibited. Although every effort has been made to ensure the accuracy of the information in this catalogue, Hepco cannot accept liability for any omissions or errors. Hepco reserves the right to make alterations to the product resulting from technical developments.

Many Hepco products are protected by: Patents, Copyright, Design Right or Registered Design. Infringement is strictly prohibited and may be challenged in law. The Customer's attention is drawn to the following clause in Hepco's conditions of sale:

'It shall be the Customer's sole responsibility to ensure that goods supplied by Hepco will be suitable or fit for any particular application or purpose of the Customer, whether or not such application or purpose is known to Hepco. The Customer will be solely responsible for any errors in, or omissions from, any specifications or information the Customer provides. Hepco will not be obliged to verify whether any such specifications or information are correct or sufficient for any application or purpose.'

Hepco's full conditions of sale are available on request and will apply to all quotations and contracts for the supply of items detailed in this catalogue.

HepcoMotion is the trading name of Hepco Slide Systems Ltd.



INVESTOR IN PEOPLE

